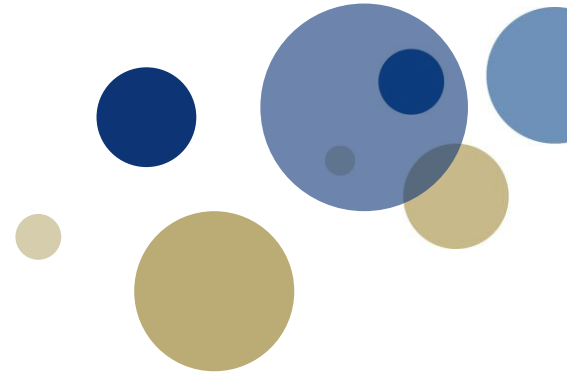




Norwegian University of
Science and Technology



The impact of Offshore Wind on Onshore Communities in Haugalandet, Norway

Thea Lurås Oftebro

EERA DeepWind 2025

15- 17 January

Introduction

- Windturbines out at sea
- Coexistence
- How do wind farms affect people who do not see them?



Background

- Floating offshore wind days
- Menon Economics
- 14 Assembly or installation ports for offshore wind



Source: <https://www.menon.no/wp-content/uploads/2023-122-Muligheter-for-norske-havner-innen-havvind.pdf>

Example 1: Windafjord Port



Source: <https://www.vindafjord.kommune.no/f/p14/ie9d4df01-15fc-4269-8cce-f9cea142e4f2/1-endeleg-forslag-til-planprogram-for-dommersnes-industriomrade-industri-og-hamneomrade-dommersnes-vedtak-planprogram.pdf>

Example 2: Windworks Jelsa



Source: <https://norseagroup.com/en/news/exploring-new-industrial-adventure-in-ryfylke>



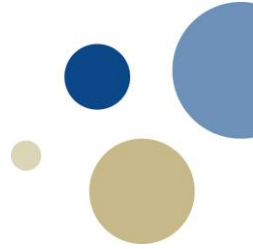
Source: <https://windworks-jelsa.no/en/about>



How does this affect local communities
where these sites are located?

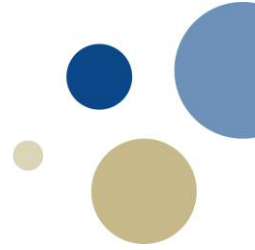
Ethnographic fieldwork

- Two weeks
- Haugalandet
- Interviews
- Local communities
- Visible engagement



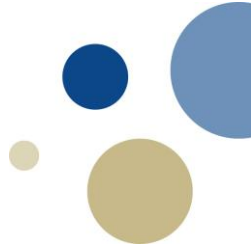
Insight from the field trip

- Split views
- What are the arguments?



Hopes and concerns

- Population growth
- Schools
- Traffic
- Economic benefit for municipality
- Restricted access to the fjord
- Pollution
- Decrease in tourism



Final remarks

- Large onshore areas is needed to realise offshore wind
- The impact of offshore wind parks extends beyond the immediate neighbours





Thank you for your attention!