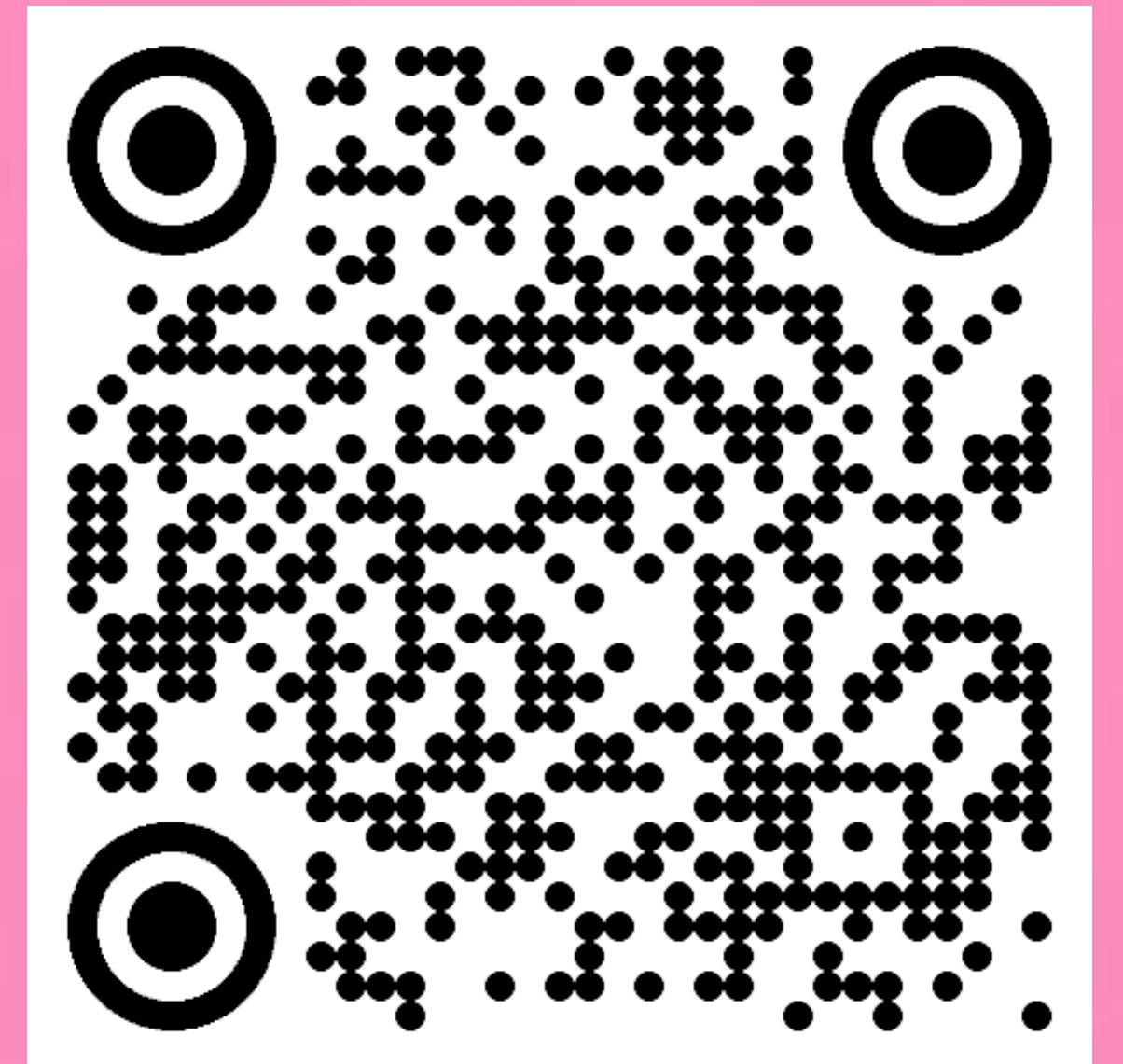








Thordur Arnason
Vice President
Capgemini AI Futures Lab







We have never provided such powerful tools to so many people without any form of oversight or control

A man in a dark uniform and sunglasses is shown from the chest up, holding two pills in his hands. The pill in his right hand is red, and the pill in his left hand is blue. The background is a blurred, dimly lit interior space, possibly a hallway or a control room.

“
*You Can Have the
Blue Pill or the Red
Pill, and We’re Out of
Blue Pills*”

YUVAL HARARI,
NEW YORK TIMES MARCH 24, 2023

A vintage steam locomotive pulling a passenger train across a wooden trestle bridge over a river. The scene is dark and atmospheric, with the train moving from left to right. The locomotive is a classic steam engine with a large boiler and a tall smokestack. The passenger cars are long and narrow, with many windows. The bridge is made of wooden planks and has a railing on the right side. The background shows trees and a river.

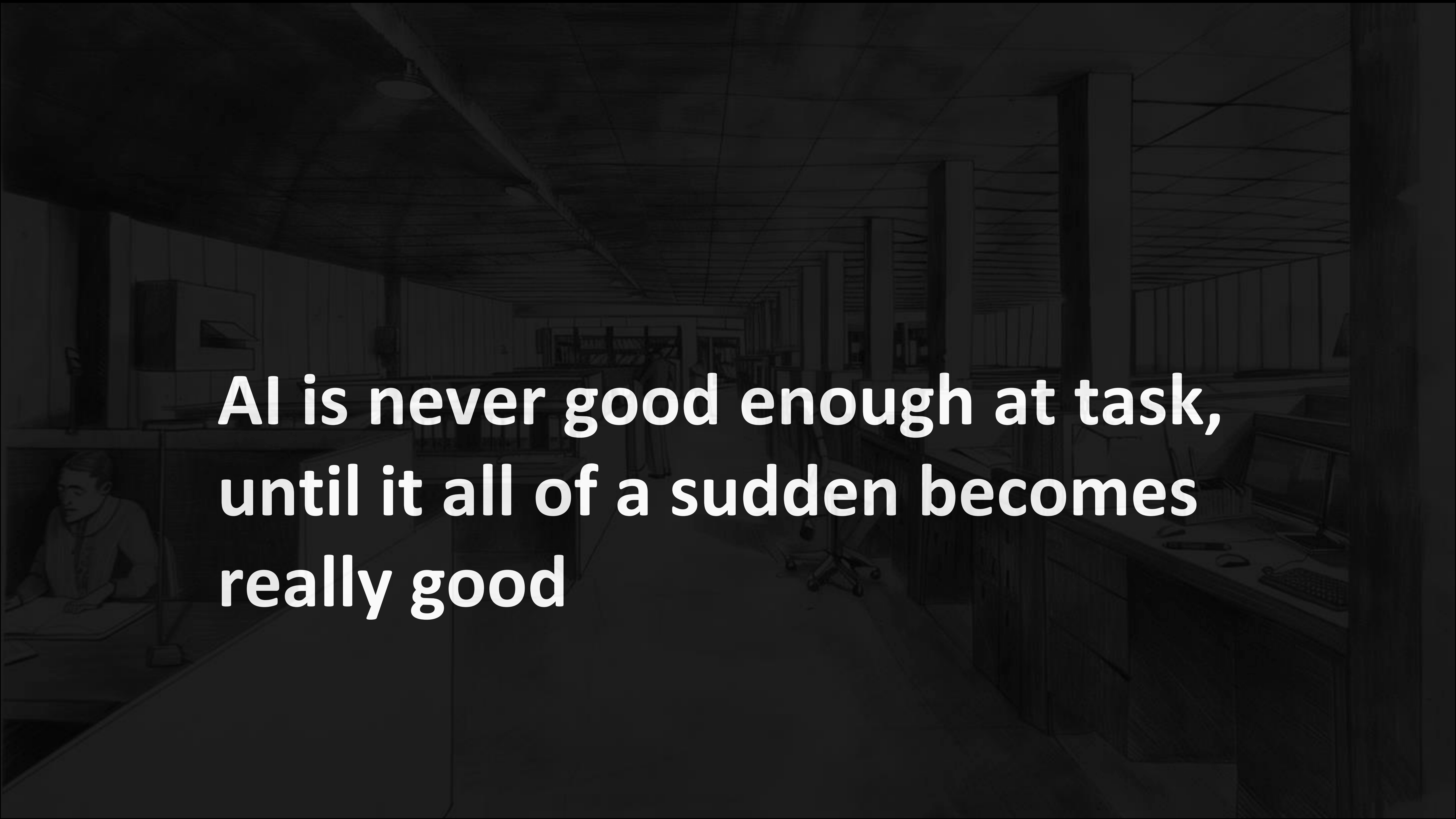
General Purpose Technologies



AinoSpeak

DNB

Client

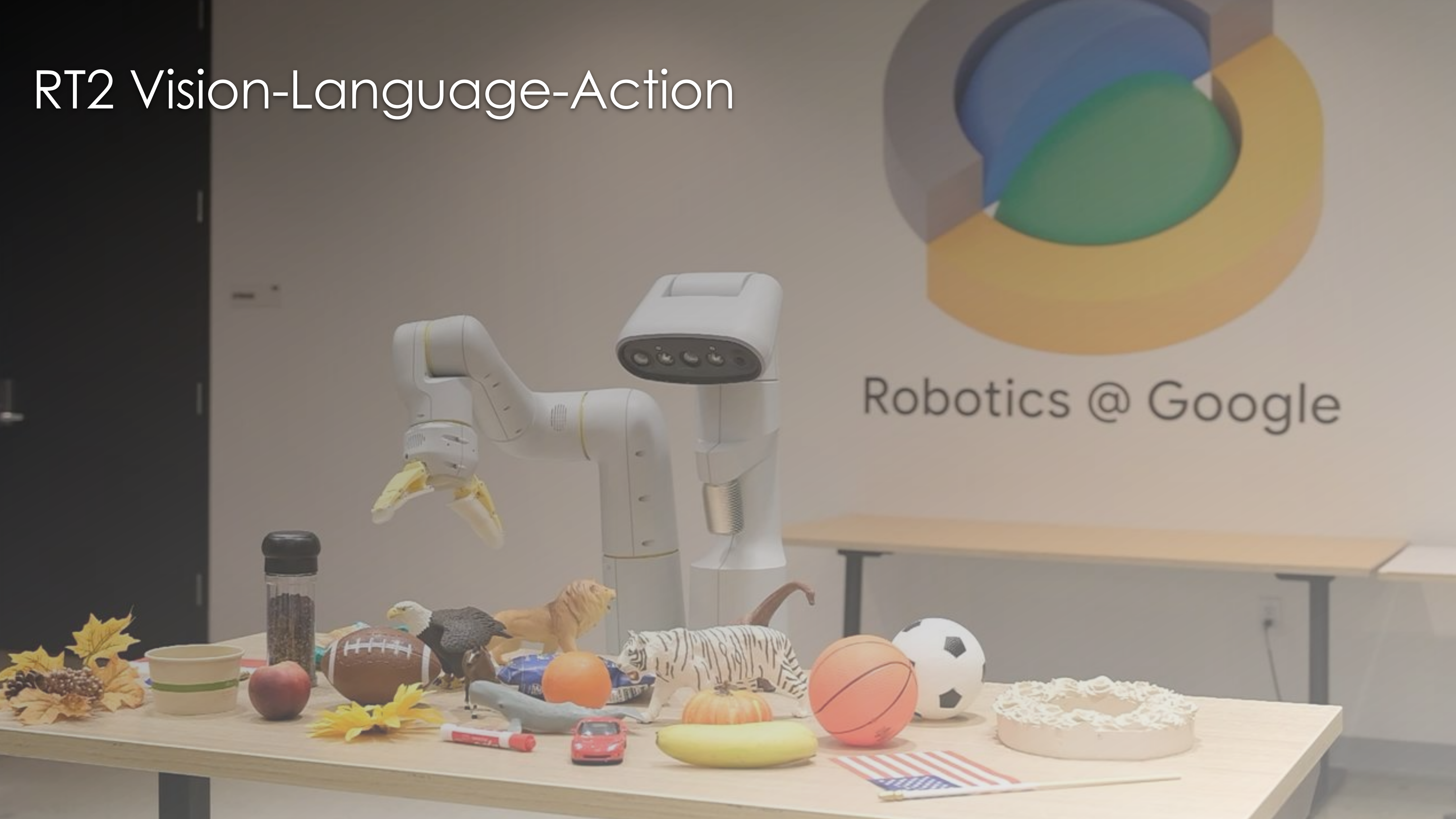


**AI is never good enough at task,
until it all of a sudden becomes
really good**

Big time in Robotics

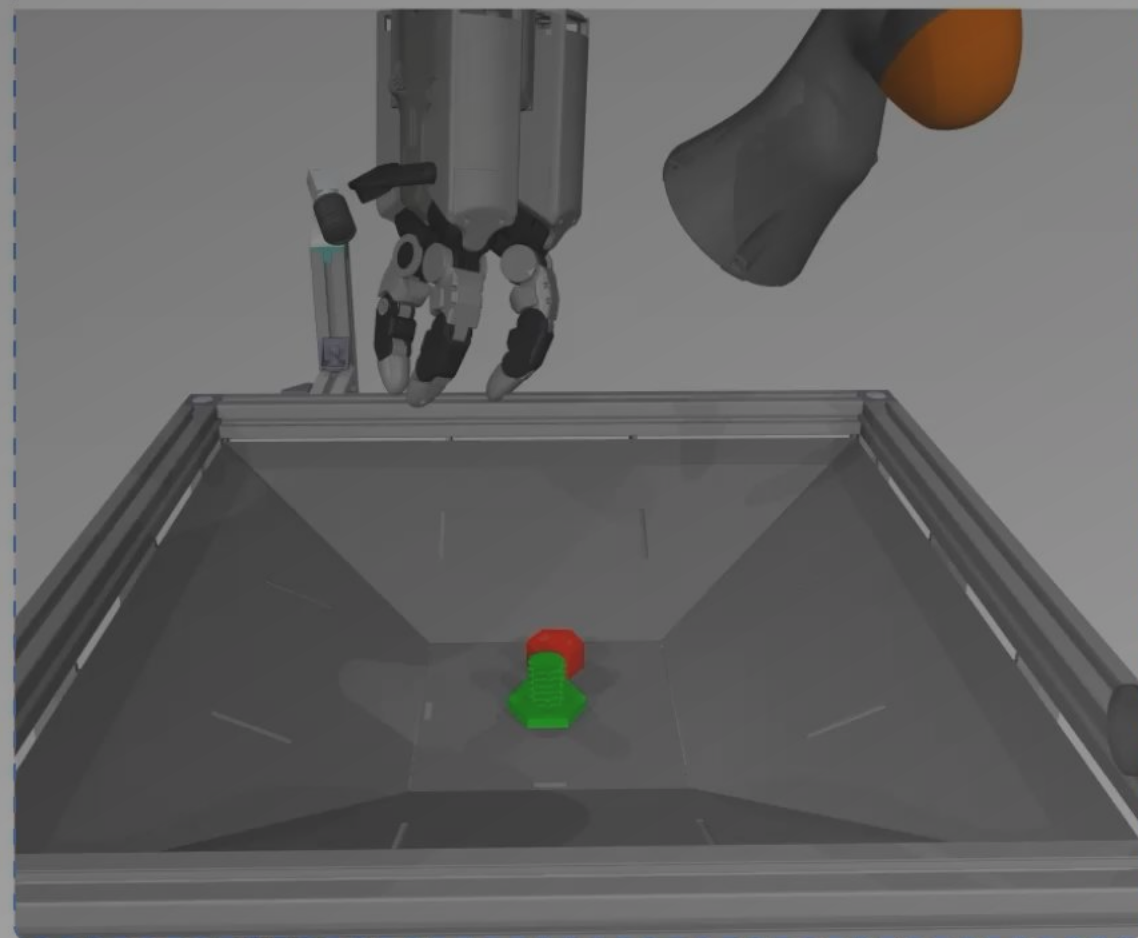


RT2 Vision-Language-Action

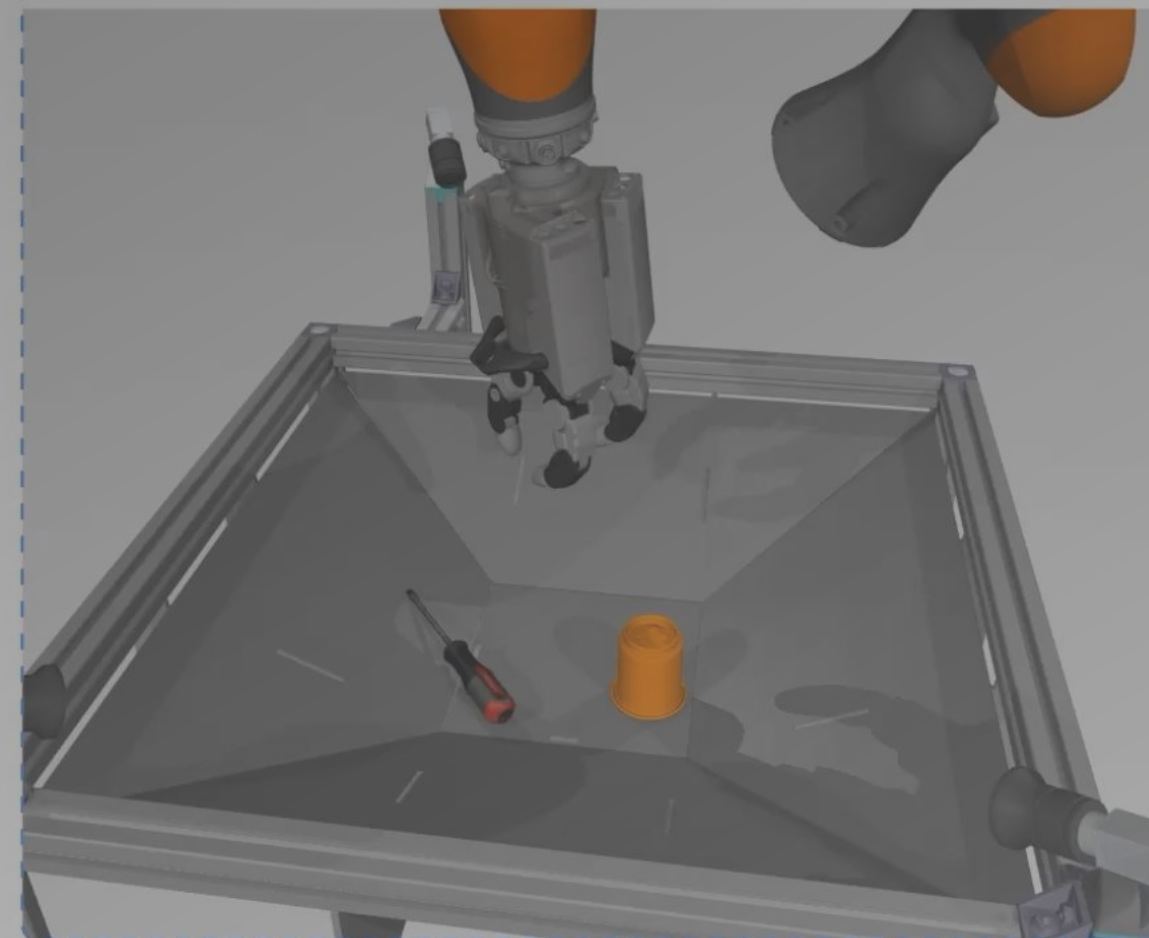


Robotics @ Google

Tighten nut on a bolt



Tool tidy-up



Autonomous 1X speed

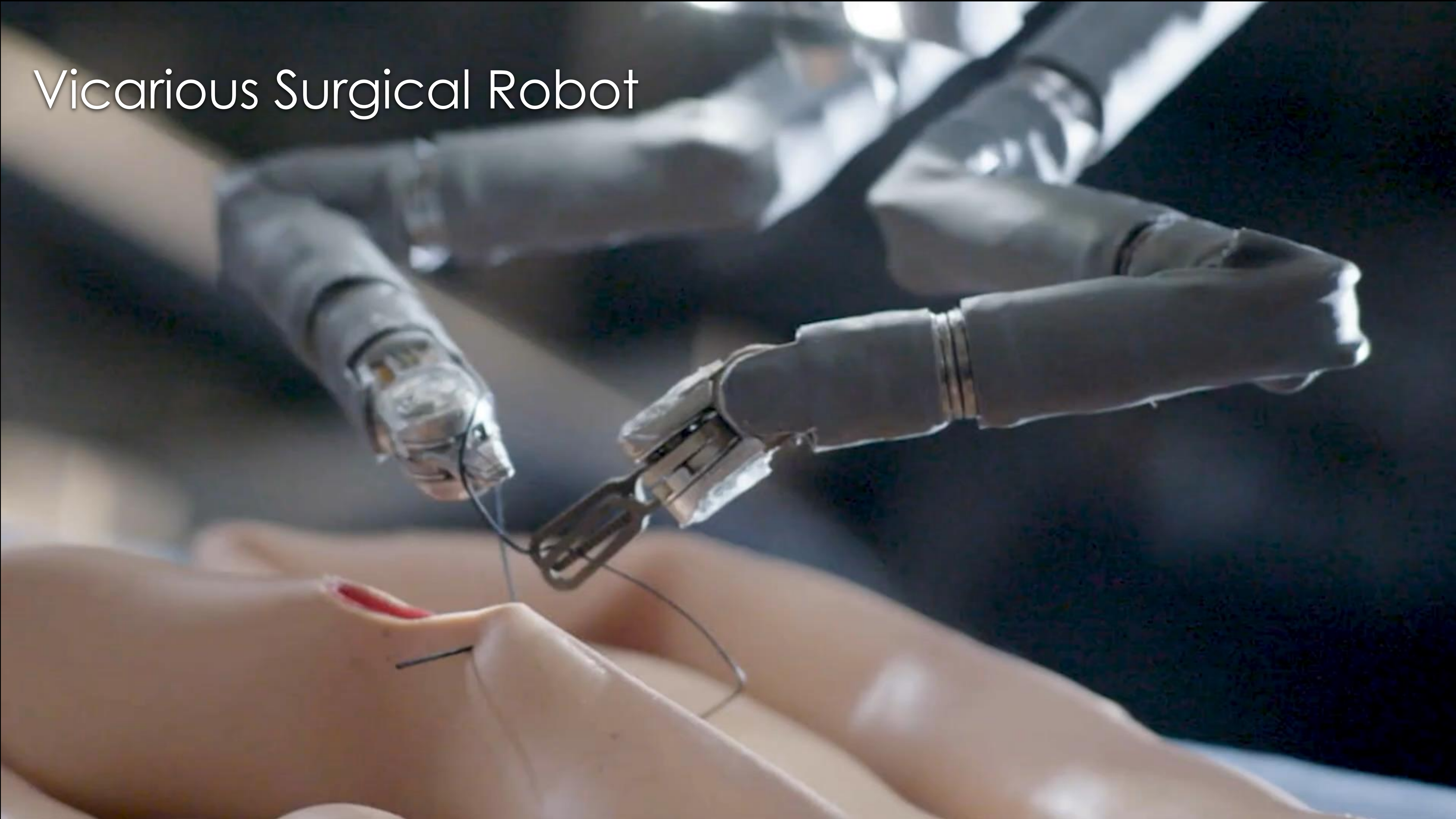


Autonomous 1X speed



Autonomous 1X speed
Deepmind training

Vicarious Surgical Robot



● 1X END-TO-END AUTONOMY
MARCH 2024 UPDATE



1X - Your new co-worker?

1X - Your new friend?





**The AI you use today is the
worst AI you'll ever use**



Capabilities & Risks



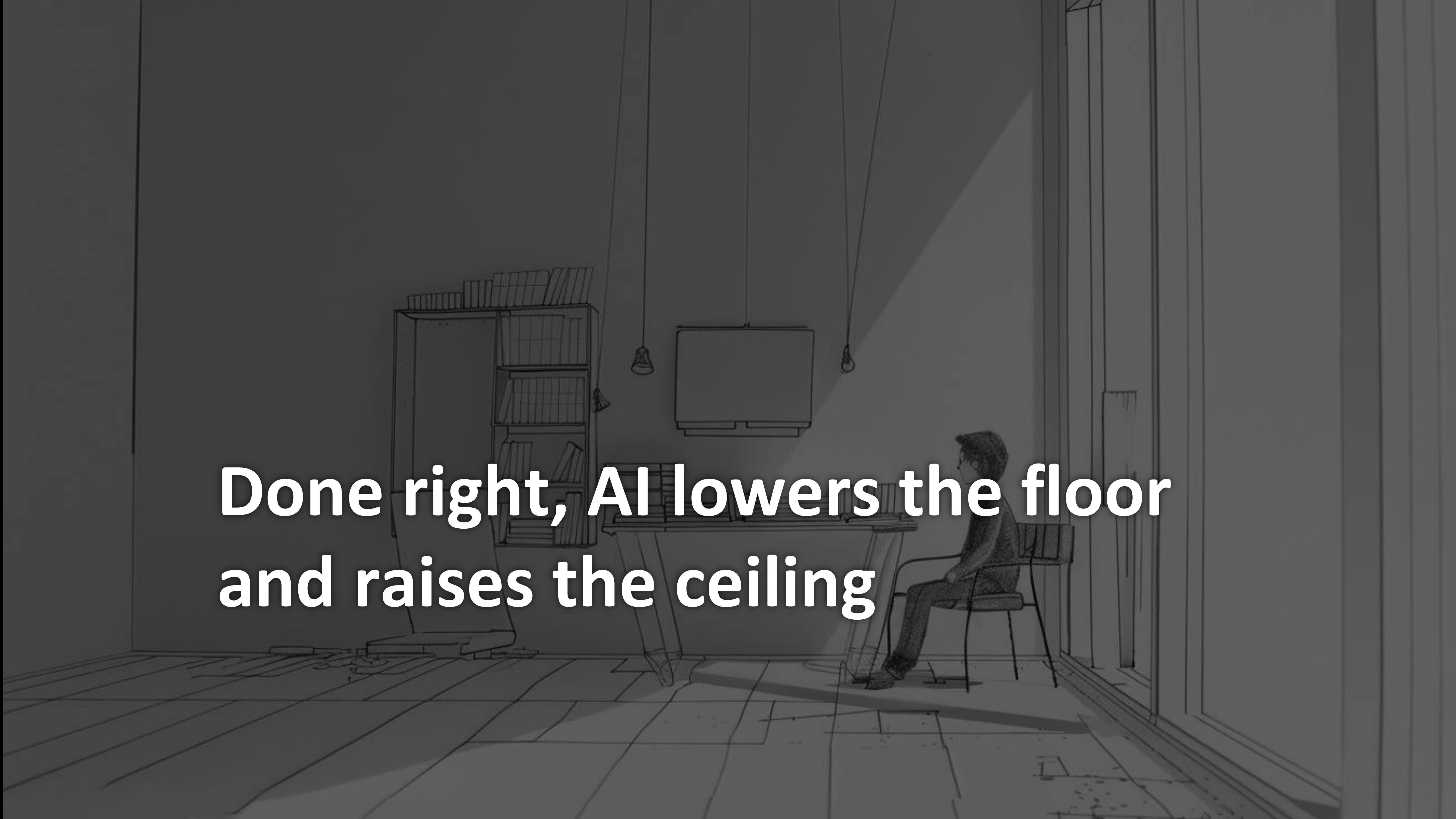
The Dual Nature of AI: Capabilities & Risks



Human-Centered AI: Bridging the Gap

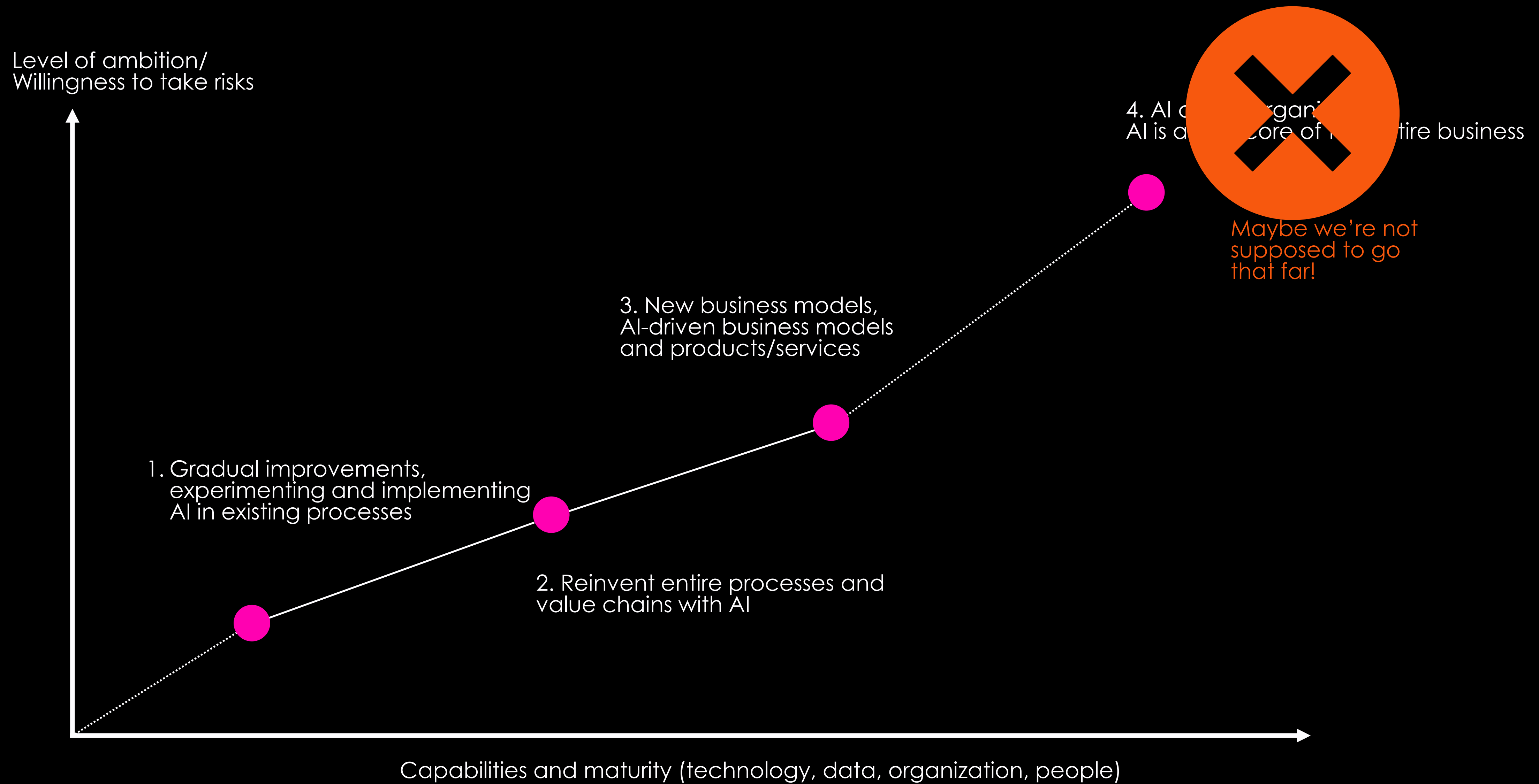


Responsible AI: Shaping the Future

A grayscale architectural sketch of a room. In the center, a person is sitting on a chair at a desk, looking towards the right. To the left of the desk is a tall bookshelf filled with books. On the wall behind the desk, a television is mounted. Two light bulbs are suspended from the ceiling by thin wires. The floor is made of large tiles, and the walls are simple lines. The overall style is a technical drawing or sketch.

**Done right, AI lowers the floor
and raises the ceiling**

Implementing AI requires maturity





**We are on a sharp curve of
rising capabilities and falling
costs**



Thordur Arnason
Vice President
Capgemini AI Futures Lab

